

Product no **AS20 4486****Anti-Blue Fluorescent Protein | BFP , clone 7F10****Product information**

Immunogen | Recombinant EBFP (NCBI accession number AX_766758 REGION: 1-717, expression vector pGEX-1N), expressed in *E.coli*.

Host | Mouse

Clonality | Monoclonal

Subclass/isotype | IgG1

Purity | Immunoglobulin Protein A purified in a 10 mM ammonium bicarbonate buffer, with 2 mg of BSA.

Format | Lyophilized

Quantity | 100 µg

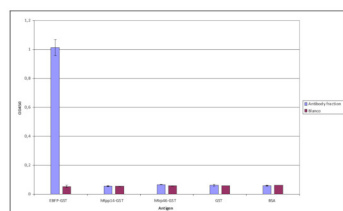
Reconstitution | Recommended antibody concentration: 0.5 mg/ml (when dissolved at 0.5 mg/ml, the BSA concentration will be 1%).
Recommended solvent; 100 mM PBS or Tris-HCl, pH 7.0 •
Additional sodium azide (up to 0.05%) is recommended for long term storage. •
For a 0.5 mg/ml antibody concentration in 1% BSA, dissolve in 200 µl buffer.

Storage | Store lyophilized/reconstituted at 2-8 °C; once reconstituted make aliquots to avoid repeated freeze-thaw cycles. Please remember to spin the tubes briefly prior to opening them to avoid any losses that might occur from material adhering to the cap or sides of the tube.

Application information

Recommended dilution | 1 : 1000-1: 5000 (ELISA)

Confirmed reactivity | BFP



Specificity of Anti-Blue Fluorescent Protein (BFP) Immunoglobulin, clone 7F10, determined by ELISA. Antibody fraction (0.5 mg/ml) 900X diluted in PBS containing 0,05% tween-20 and 5% non fat dry milk. Antibody was tested on various recombinant protein substrates i.e. hRpp14-GST (pGEX-2T), hRrp46-HIS10 (pET16b), GST (pGEX-2T) and BSA, 98% (Sigma).